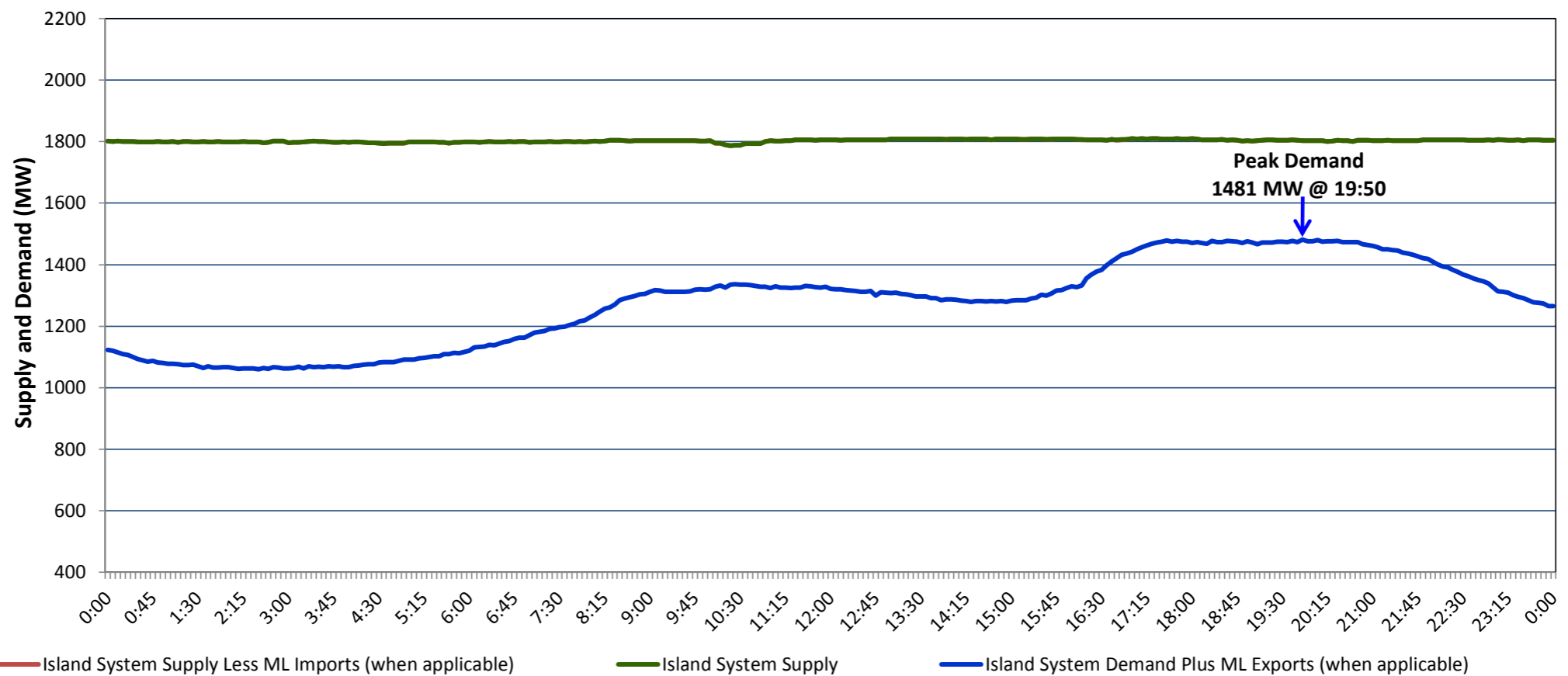


**Newfoundland Labrador Hydro (NLH)
Supply and Demand Status Report Filed Monday, January 22, 2018**

**Section 1
Island Interconnected System Supply, Demand & Exports
Actual 24 Hour System Performance For Sunday, January 21, 2018**



Supply Notes For January 21, 2018

1,2

- A As of 0739 hours, January 03, 2018, Holyrood Unit 2 available at 154 MW (170 MW).
 B As of 2115 hours, January 04, 2018, Stephenville Gas Turbine available at 25 MW (50 MW).
 C As of 0943 hours, January 18, 2018, Holyrood Unit 3 available at 120 MW (150 MW).
 D As of 1916 hours, January 20, 2018, Holyrood Unit 1 unavailable 140 MW (170 MW).

**Section 2
Island Interconnected Supply and Demand**

Mon, Jan 22, 2018	Island System Outlook ³	Seven-Day Forecast	Temperature (°C)		Island System Daily Peak Demand (MW)	
			Morning	Evening	Forecast	Adjusted ⁷
Available Island System Supply: ⁵	1,750 MW	Monday, January 22, 2018	-7	-8	1,635	1,525
NLH Generation: ⁴	1,435 MW	Tuesday, January 23, 2018	-8	-6	1,605	1,446
NLH Power Purchases: ⁶	130 MW	Wednesday, January 24, 2018	-1	5	1,475	1,278
Maritime Link Imports:	- MW	Thursday, January 25, 2018	0	-3	1,495	1,387
Other Island Generation:	185 MW	Friday, January 26, 2018	-4	-6	1,500	1,391
Current St. John's Temperature & Windchill: -8 °C	-17 °C	Saturday, January 27, 2018	-6	-8	1,600	1,490
7-Day Island Peak Demand Forecast:	1,635 MW	Sunday, January 28, 2018	-3	5	1,445	1,303

Supply Notes For January 22, 2018

3

- E At 0752 hours, January 22, 2018, Holyrood Unit 2 available at 136 MW (170 MW).

- Notes:
1. Generation outages for running and corrective maintenance are included. These are not unusual for power system operations. They generally do not impact customer supply. The power system operators schedule outages to system equipment whenever possible to coincide with periods when customer demands are low and sufficient supply reserves are available. However, from time to time equipment outages are necessary and reserves may be impacted.
 2. Due to the Island System having no synchronous connections to the larger North American grid, when there is a sudden loss of large generating units some customer's load must be interrupted for short periods to bring generation output equal to customer demand. This automatic action of power system protection, referred to as under frequency load shedding, is necessary to ensure the integrity and reliability of system equipment. Under frequency events typically occur 5 to 8 times per year on the Island Interconnected System and the resultant customer load interruptions are generally less than 30 minutes.
 3. As of 0800 Hours.
 4. Gross output including station service at Holyrood (24.5 MW) and improved NLH hydraulic output due to water levels (35 MW).
 5. Gross output from all Island sources (including Note 4).
 6. NLH Power Purchases include: CBPP Co-Gen, Nalcor Exploits, Rattle Brook, Star Lake, Wind Generation, Vale capacity assistance (when applicable).
 7. Adjusted for CBP&P, Vale and Praxair interruptible load, Maritime Link Exports and the impact of voltage reduction (when applicable).

**Section 3
Island Peak Demand Information
Previous Day Actual Peak and Current Day Forecast Peak**

Sun, Jan 21, 2018	Actual Island Peak Demand ⁹	19:50	1,481 MW
Mon, Jan 22, 2018	Forecast Island Peak Demand		1,635 MW

- Notes: 9. Island Demand / ML Exports (where applicable) is supplied by NLH generation and purchases, plus generation owned and operated by Newfoundland Power and Corner Brook Pulp & Paper (Deer Lake Power, DLP).